

B&C SAFRAN PURE /WOMEN - PW 455



SKINNY FIT

- Short-sleeved Fine Piqué polo shirt
- 1x1 rib collar and cuffs
- 2-button placket with matching colour buttons
- Feminine cut
- Necktape
- Side seams



100% pre-shrunk ring-spun combed cotton
HEATHER GREY: 90% PRE-SHRUNK RING SPUN COTTON - 10% VISCOSE

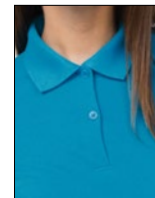
Fine Piqué

180 g/m²

XS - S - M - L - XL - XXL*

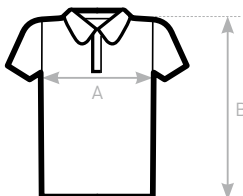
5 pcs/pack & 50 pcs/carton

* ONLY AVAILABLE IN WHITE, BLACK, NAVY, RED, SKY BLUE, ROYAL BLUE, BOTTLE GREEN, HEATHER GREY AND PINK SIXTIES



DUO
CONCEPT

with B&C Safran
EXISTS IN B&C SAFRAN /KIDS



SIZES [CM]

B&C SAFRAN PURE /W. PW 455	XS	S	M	L	XL	XXL	XXXL
A HALF CHEST	40,5	43	45,5	48	50,5	53	-
B BODY LENGTH FROM NECK POINT	56,5	58	59,5	61	62,5	64	-

